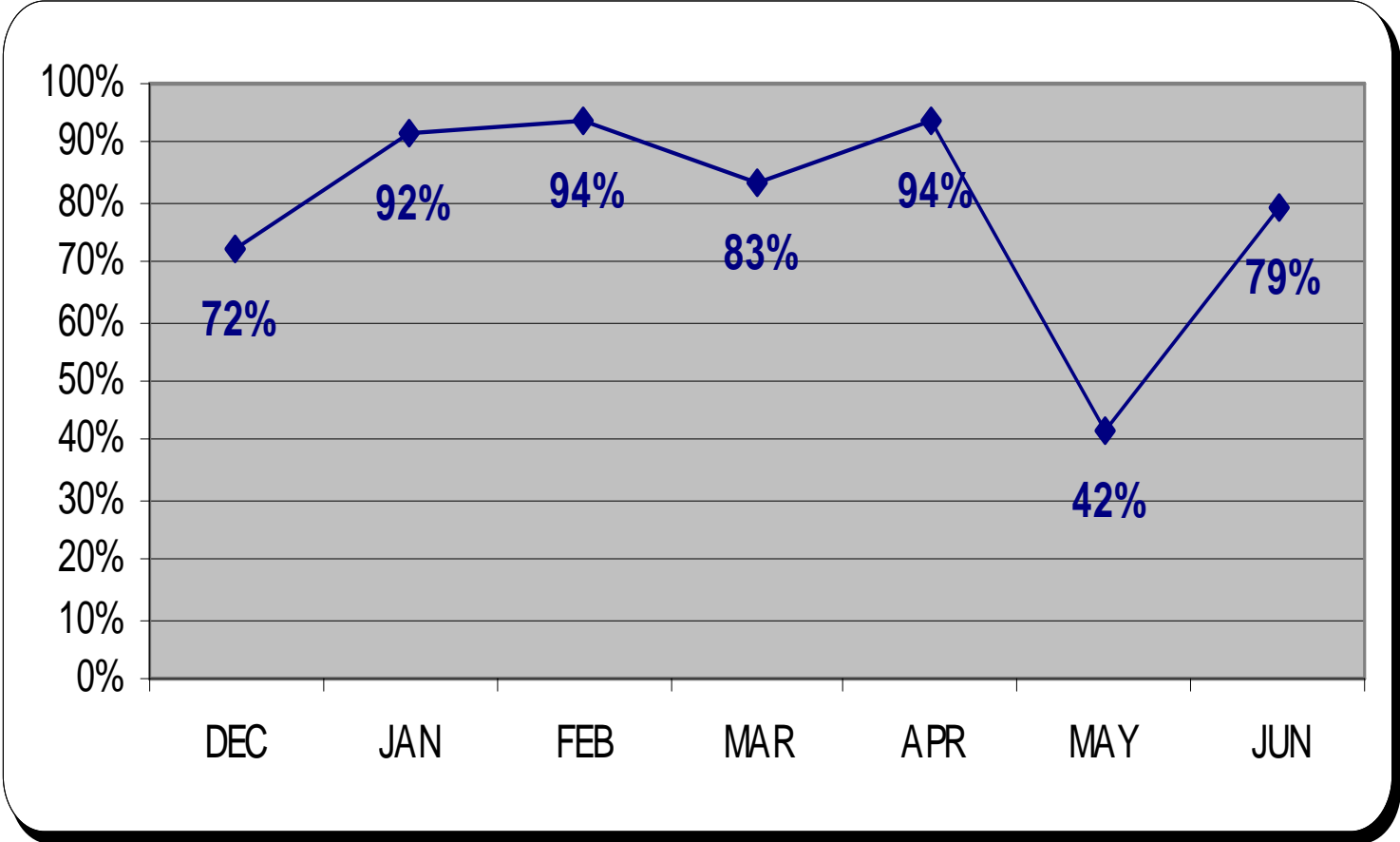
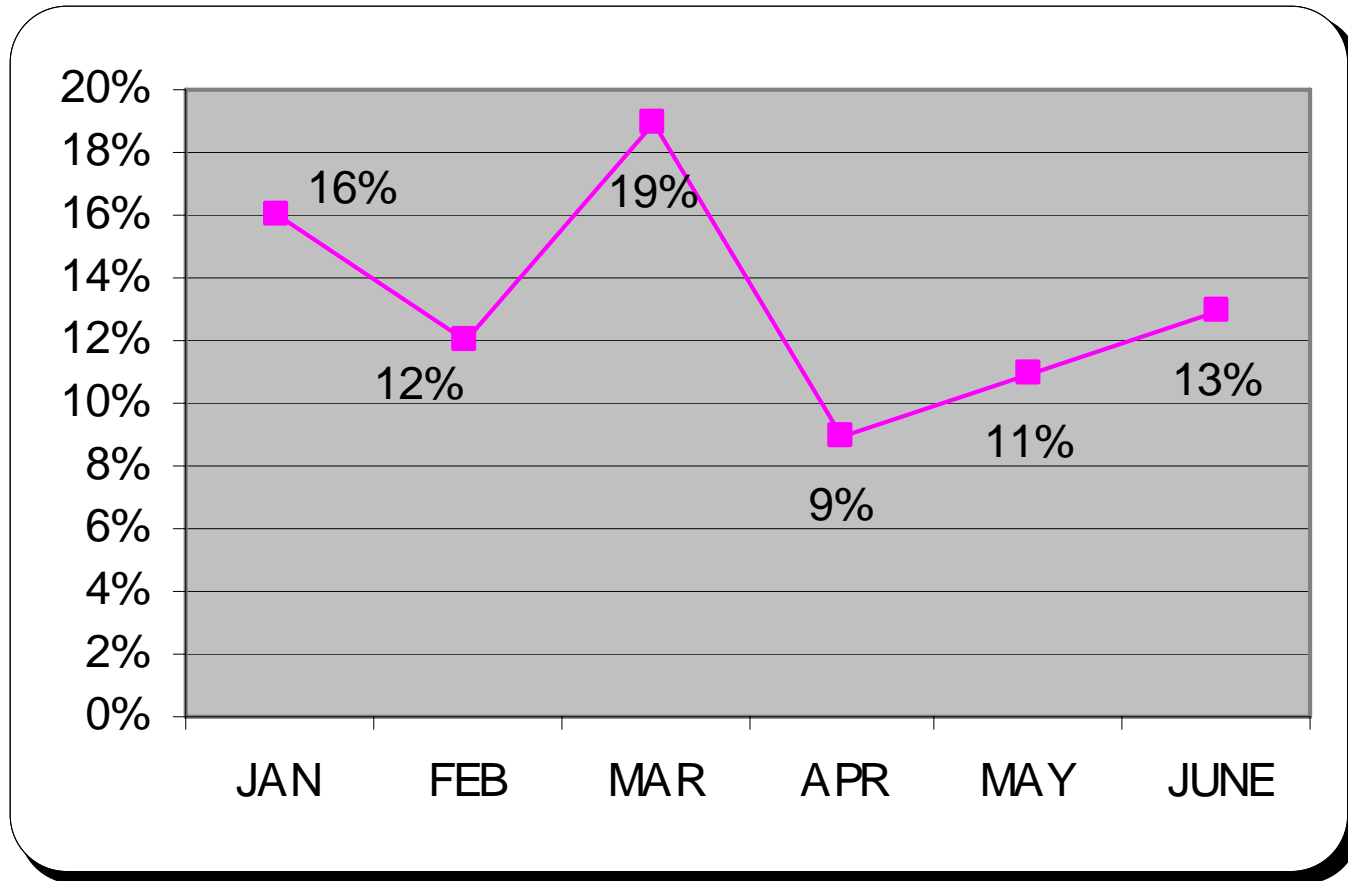


% Graffiti Work Orders Completed within 48 Hours (2 business days) Dec 2006 – Jun 2007



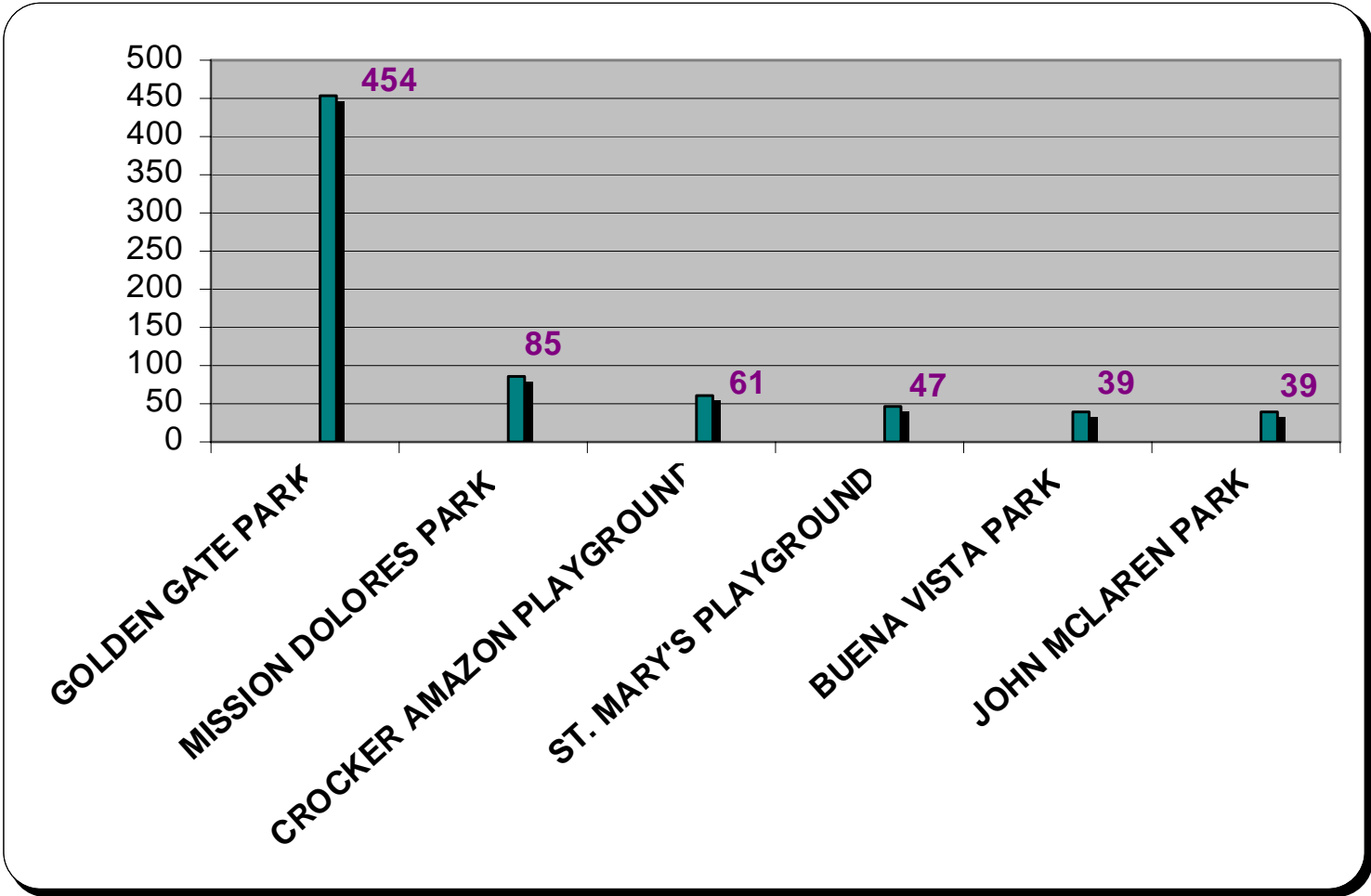
Data collection for this new measure began in December 2006.

% Labor Hours devoted to Graffiti Abatement Jan – Jun 2007

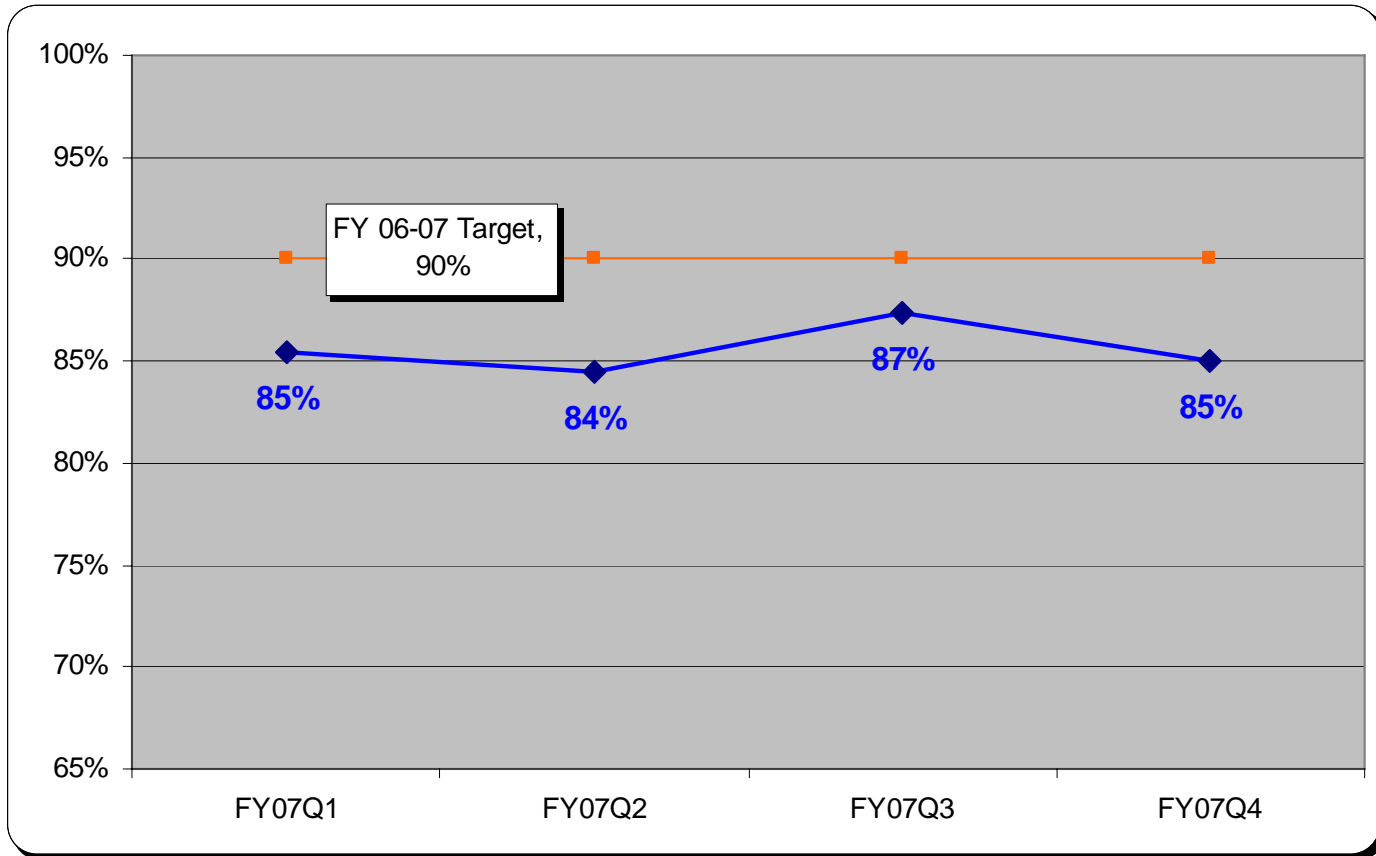


Data collection for this new measure began in December 2006.

Repeat Graffiti Work Orders Top 5 sites most often hit by graffiti FY 06-07



% of Park Maintenance Standards Met – Citywide FY 06-07



Overall average FY 06-07 was 86%, up from 83% in FY 05-06.

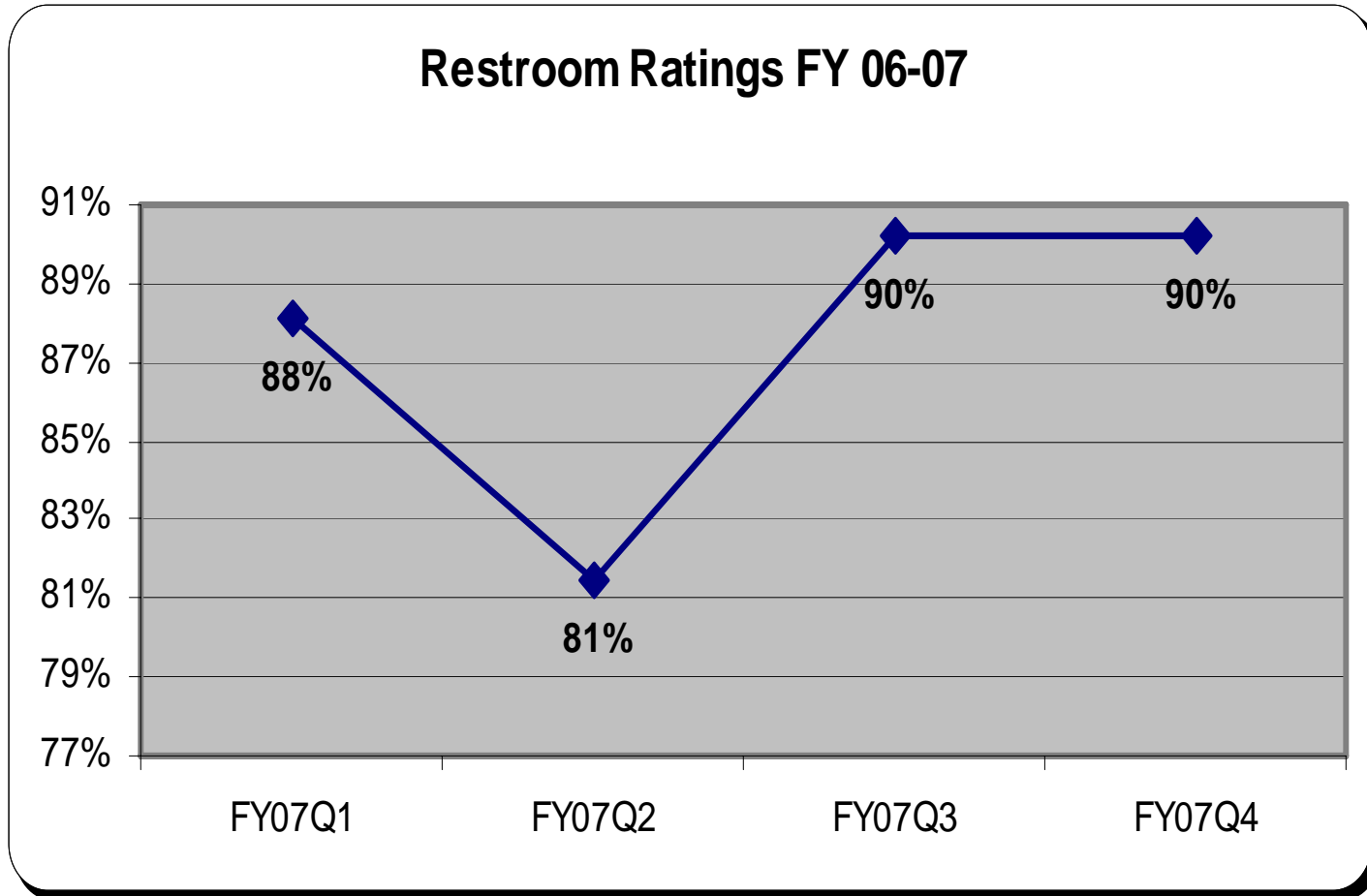


% Cleanliness Ratings Met FY 06-07

<u>PARK FEATURE</u>	Q1	Q2	Q3	Q4	FY 06-07
Benches, Tables, and Grills	89%	86%	86%	88%	87%
Childrens Play Areas	72%	60%	63%	70%	66%
Dog Play Areas	85%	79%	94%	92%	88%
Hardscapes and Trails	77%	79%	79%	78%	79%
Lawns	91%	89%	87%	88%	88%
Open Space	81%	92%	63%	69%	75%
Ornamental Gardens, Shrubs, and Ground Covers	79%	79%	76%	81%	79%
Outdoor Athletic Courts	84%	92%	92%	87%	89%
Parking Lots and Roads	93%	93%	72%	84%	83%
Restrooms	88%	78%	90%	88%	86%
Turf Athletic Fields	90%	91%	94%	82%	89%
Waste and Recycling Receptacles	90%	88%	86%	84%	87%
Citywide Average	85%	83%	83%	84%	84%

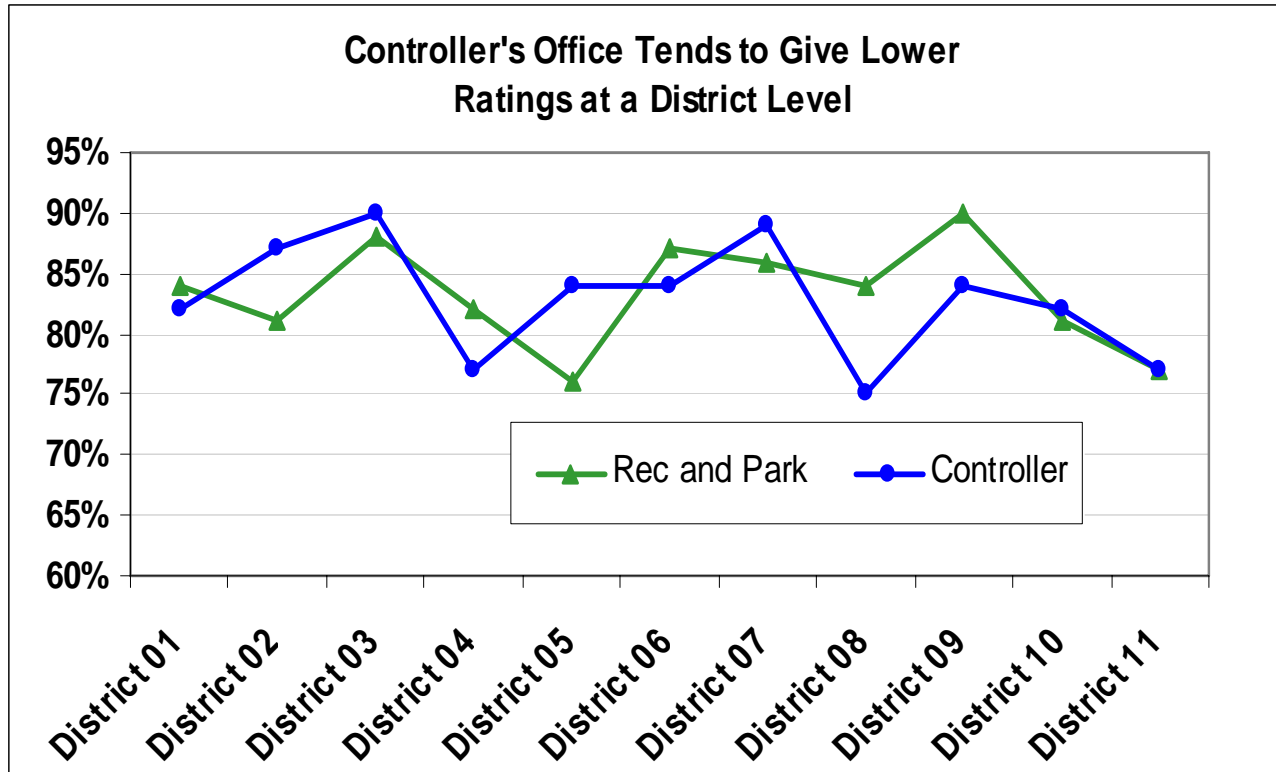
Data collection for this new measure began in FY 07 Q1.

Citywide % of Restroom Standards Met



Citywide Restroom Rating FY 06-07 = 87%. Closed restrooms are not rated.

REC and CON FY 06-07



Citywide

	FY05-06	FY06-07
REC	82%*	86%
CON	80%	82%



*CON calculates based on 2 first quarters of data.

Greater alignment in ratings by both agencies at the individual park level

- ★ Inspection results FY 06-07
 - 163 parks inspected by both REC and CON staff
 - 63 parks (39%) received scores varying by less than 5% pts
 - ★ up from 35 parks (22%) last year
- ★ Possible explanations for decreased variances at individual park level
 - Joint REC-CON training
 - Increased inspections experience and familiarity with standards
- ★ Goals for FY07-08
 - Beginning in Q3, RPD staff will inspect every park each quarter
 - CON staff will inspect a targeted number of parks every quarter and all parks once a year



Thank You

